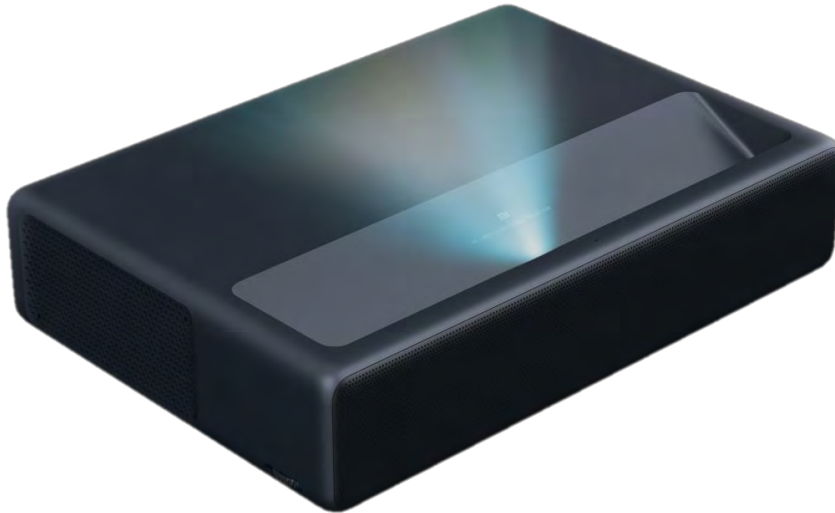




# Mi 4K Laser Projector 150"



ID/SKU: 28179/BHR4152GL

## Premium Video Quality (4K)

- With 3840\*2160 UHD resolution, the projector delivers incredible details of pictures.

## High Brightness Laser Light Source

- The premium laser light source brings 1,600 ANSI lumens high brightness and 25,000 hours long lamp life.
- ALPD 3.0 technology which used in top movie theaters provides high color accuracy and wide color gamut.

## Ultra-Short Throw Ratio

- The optimized screen size can be set from 80" to 150".
- With 0.233:1 throw ratio, just place the projector 30 cm away from wall to create a impressive 120 inch huge screen to enjoy your home cinema in any place.

## Android TV 9.0 System

- The built-in Android TV 9.0 system provides rich contents and apps of videos and games.
- Easily activate the built-in Google Assistant by clicking the controller button.

## Built-In Stereo Speaker

- Built in 2\*15W(dual full range and dual tweeter) speakers deliver a great sound quality with Dolby and DTS codec supported.
- The projector can also be used as a standalone Bluetooth stereo when connecting with your phone by Bluetooth.

## 8-Point Keystone Correction

- The motor focus adjustment and 8-point keystone correction will help you set up the projector with ease.

# Mi 4K Laser Projector 150"



## Specifications:

---

Standard Resolution	4K (3840*2160)
Light Source Technology	ALPD (Advanced Laser Phosphor Display)
Brightness	1300lm (high brightness mode)
Screen Size	80"~150"
Throw Ratio	0.233:1
Internal Storage	16GB eMMC High-speed Flash Memory
Speaker	2*15W
Connectivity	Bluetooth 4.1, WiFi(2.4G/5G)
Operating System	Android TV 9.0
Power Input	100V~240V 50/60Hz
Port	HDMI 2.0*2, HDMI 2.0/ARC *1, USB 2.0*1, Audio Jack *1, AV input *1, S/PDIF *1, Ethernet port*1,
Weight	7.0Kg
Size	410*291*88mm

## Contents in package:

---

Laser Projector *1	Power Cord *1	Remote Controller *1	User Manual *1
Warranty Notice *1	Cleaning Cloth *1		